



## DIGITAL HAND TACHOMETERS

# HT-3100/4100

Designed for advanced performance, these handheld digital tachometers represent a new standard in design and performance. The HT-3100 contact-type tachometer features an easy-to-hold curved design and a convenient compartment for storage of a tangential speed measurement ring. The HT-4100 non-contact type is small and thin enough to fit easily in your pocket.

**ONO SOKKI**

# BIG PERFORMANCE IN A LITTLE PACKAGE THAT'S A SNAP TO USE.

Easy operation and functions that are clearly quantum leaps in handheld tachometer performance.

## CONTACT TYPE HT-3100

Low range that enables measurements from 1.5 r/min, and an integral storage compartment for both a circumferential speed ring and a rpm measurement contact tip.

- **Wide measurement range: 1.5 to 10,000 r/min**

Two modes are provided: a low mode covering 1.5 to 2,000.0 r/min, and a high mode covering 15 to 10,000 r/min.

- **Measures tangential speed as well as rpm.**

Simply replace the rpm measurement contact tip with a disc-shaped circumferential speed ring to measure tangential speeds in m/min. or mm/s.

- **Convenient storage compartment**

To enable tangential speed measurements at any time, just slip the circumferential speed ring, along with an rpm measurement contact tip, into the convenient storage compartment provided inside the HT-3100. When using the circumferential speed ring, two rpm measurement contact tips can be stored.

- **Data hold function**

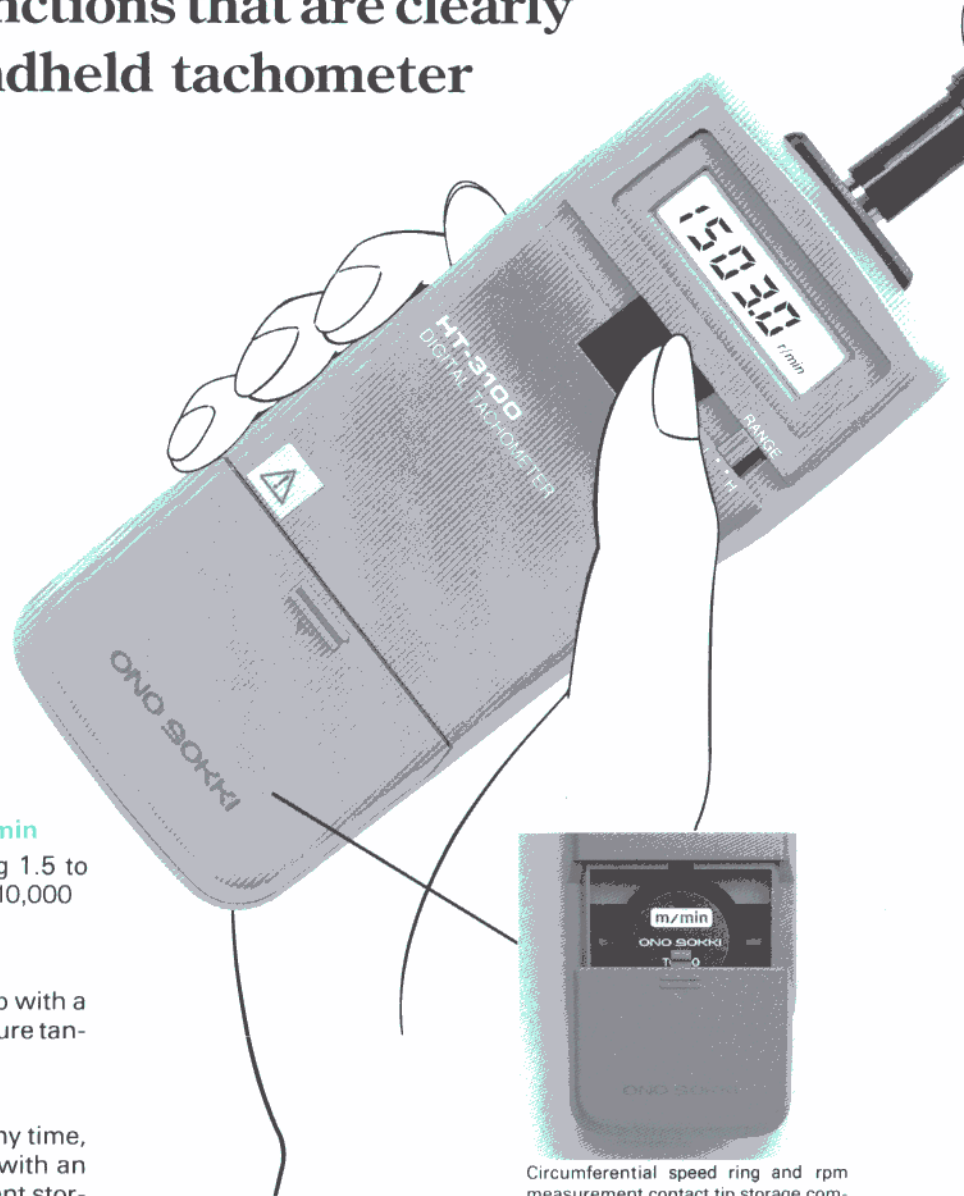
The last measured value is automatically held for 1 minute, enabling easy checking and recording of measurements.

- **Compact, lightweight design and extremely simple operation**

With its display positioned for easy reading and its easy-to-hold curved design, the compact HT-3100 is truly designed for simple operation.

- **Battery replacement warning**

To ensure accurate measurements at all times, the HT-3100 warns the user when a battery replacement is required with a  $B^{-}$  indicator in the display.



Circumferential speed ring and rpm measurement contact tip storage compartment

### HT-3100 SPECIFICATIONS

Measurement range (switch selectable modes)  $\Delta$

1.5 to 2,000.0 r/min (Low mode)

15 to 10,000 r/min (High mode)

Circumferential speed

	With KS-100 (Optional)	With KS-200 (Accessory)
Lo range	1.5 to 2000.0mm/s	0.15 to 200.00m/min
Hi range	15 to 1000mm/s	1.5 to 1000.0m/min

Display LCD

Number of displayed digits 5

Measurement display time

Low mode: Automatically repeated every 1 s (2 s in the range 1.5 to 3.0 r/min)

High mode: Automatically repeated every 1 s (2 s in the range 15 to 30 r/min)

Measurement accuracy

Low mode 1.5 to 1249.9r/min  $\pm 0.1$  r/min 1,250.0 to 2,000.0 r/min  $\pm 0.2$  r/min

High mode 15 to 10,000r/min:  $\pm 1$ r/min

Data hold function

Measured value is held on the display for 1 minute after completion of a measurement.

Power/battery life

Three type AAA (ANSI), R03 (IEC, DIN, and BS), or 24 (NEDA) batteries; continuous operation for 50 hours.

Operating temperature range 0 to +40°C

Dimensions and weight

171.5(W) x 38(H) x 60(D)mm, approx 200g

Accessories

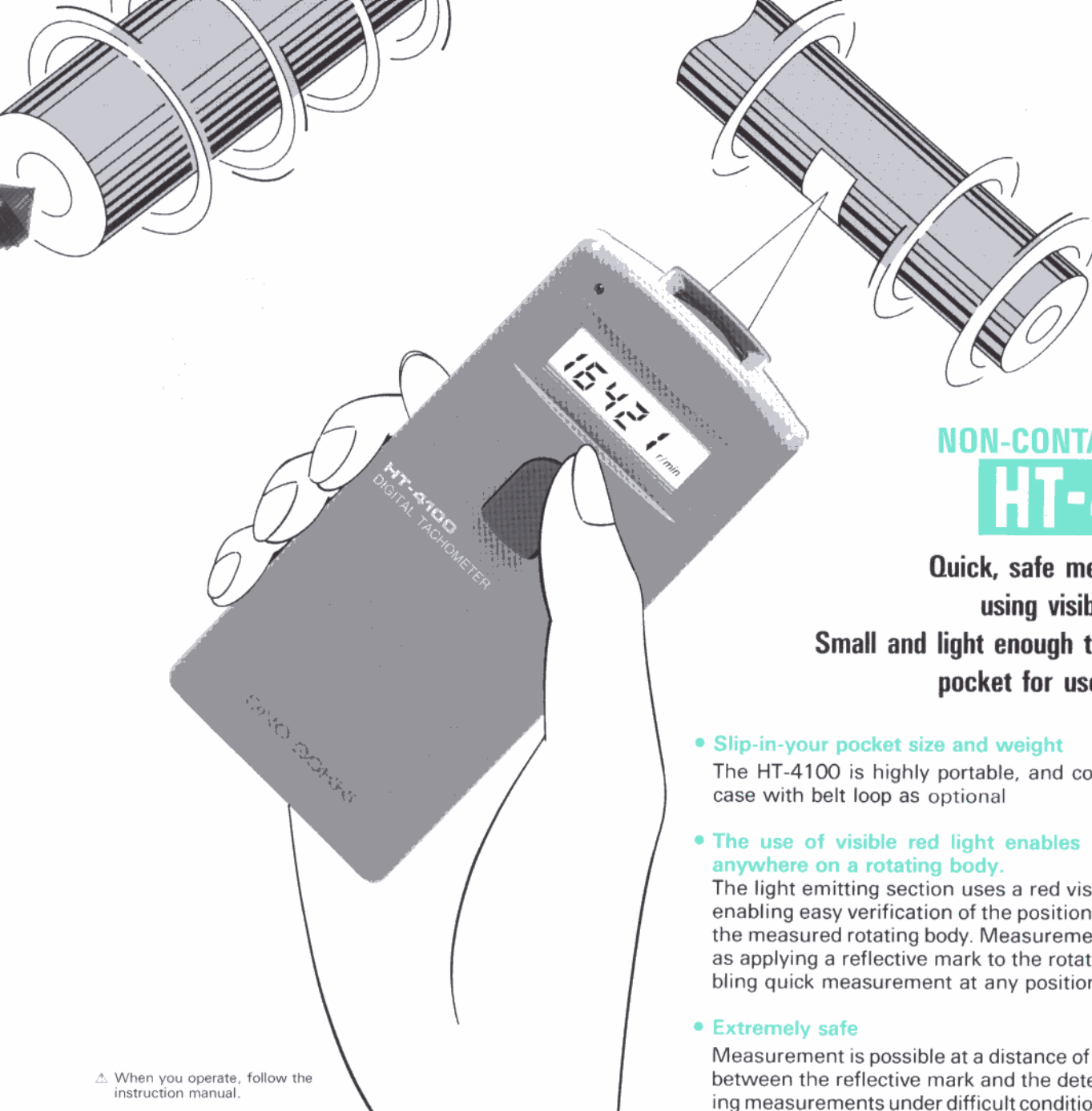
KS-300 Rpm Measurement Contact Tips (two, one of which is stored inside the HT-3100)

KS-200 Circumferential Speed Ring (m/min., stored inside the HT-3100)

Type AAA batteries (3)

Separately sold accessory

HT-0001A Hard Case



△ When you operate, follow the instruction manual.

### HT-4100 SPECIFICATIONS

Measurement range △ 30 to 50,000 r/min	Power/battery life Three type AAA (ANSI), R03 (IEC, DIN, and BS), or 24 (NEDA) batteries; continuous operation for 20 hours.
Display LCD	Operating temperature range 0 to +40°C
Number of displayed digits 5	Dimensions and weight 123(W) × 23(H) × 58(D)mm, approx. 110 g.
Measurement display time Automatically repeated every 1 s (2 s in the range 30 to 60 r/min)	Accessories Reflective Marks (1 sheet) Type AAA batteries (3)
Measurement accuracy 30 to 12,499 r/min ± 1 r/min 12,500 to 24,999 r/min ± 2 r/min 25,000 to 50,000 r/min ± 4 r/min	Separately sold accessory HT-0002A Hard case HT-0003 Soft case HT-011 Reflective marks (sets of 10 sheets)
Data hold function Measured value is held on the display for 1 minute after completion of a measurement.	
Detectable distance 20 to 300mm	

## NON-CONTACT TYPE HT-4100

**Quick, safe measurements using visible red light. Small and light enough to fit in your pocket for use anywhere.**

- **Slip-in-your pocket size and weight**

The HT-4100 is highly portable, and comes with soft case with belt loop as optional

- **The use of visible red light enables measurement anywhere on a rotating body.**

The light emitting section uses a red visible-light LED, enabling easy verification of the position of the light on the measured rotating body. Measurement is as simple as applying a reflective mark to the rotating body, enabling quick measurement at any position on the body.

- **Extremely safe**

Measurement is possible at a distance of 20 to 300 mm between the reflective mark and the detector, simplifying measurements under difficult conditions, and ensuring safety.

- **Data hold function**

The last measured value is automatically held for 1 minute, enabling easy checking and recording of measurements.

- **Measurement from 30 to 50,000r/min indicated on a 5-digit display**

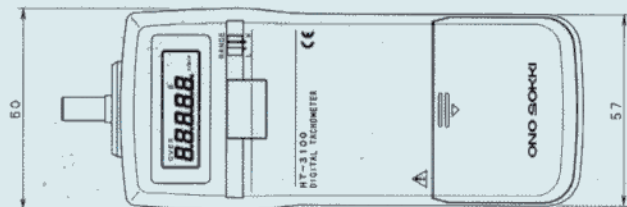
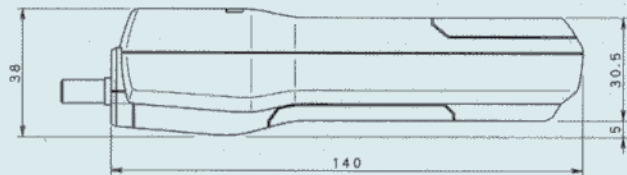
The HT-4100 covers the wide measurement range of 30 to 50,000r/min, with measured values indicated on an easy-to-read LCD.

- **Battery replacement warning**

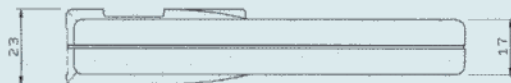
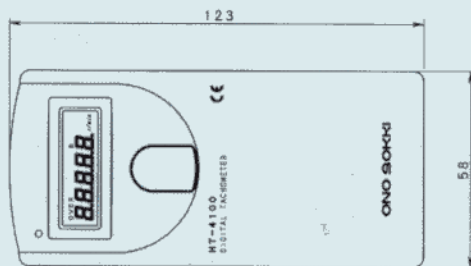
To ensure accurate measurements at all times, the HT-4100 warns the user when a battery replacement is required with a 'B' indicator in the display.

## Outer Dimensions

### HT-3100



### HT-4100



(mm)

## Accessories (Options)

### Measurement Contact Tips (Contact Type)

KS-100 Circumferential Speed Ring  
(for mm/s)



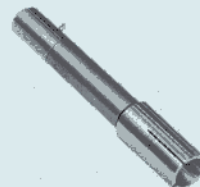
KS-200 Circumferential Speed Ring  
(for m/min)



KS-300 Rpm Measurement Contact  
Tip



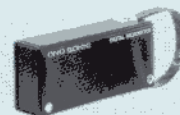
KS-700 Extension Shaft



● Carrying Case  
HT-0001A  
Carrying case for HT-3100



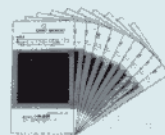
HT-0002A  
Carrying case for  
HT-4100



HT-0003  
Soft type carrying  
case for HT-4100



● HT-Q11 Reflective Marks (for non-  
contact type)



These marks use light-reflective bodies which are ideal for use with the HT-4100 (10 sheets, each with 25 marks measuring 12 × 12 mm).

● HT-3100 With Circumferential  
Speed Ring Mounted

